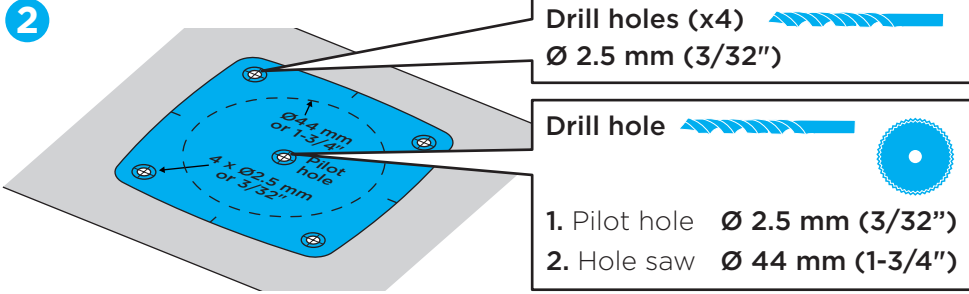


MINI CONTROLLER INSTALLATION

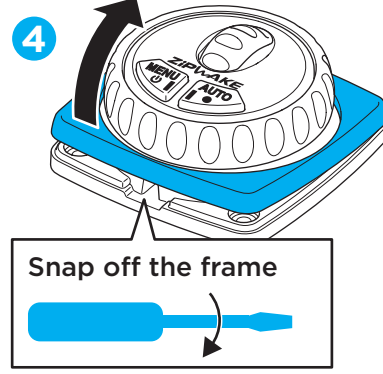
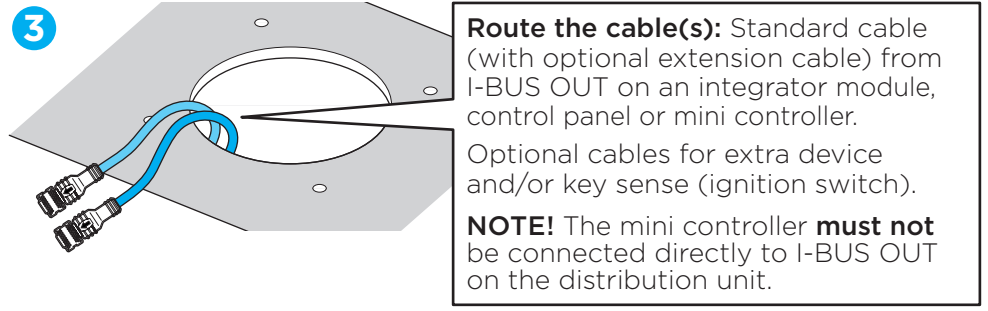
1 PREPARE THE DASH

Locate a free area on the dash suitable for mounting the mini controller. Use the template as a guide to see if it will fit next to other instruments.

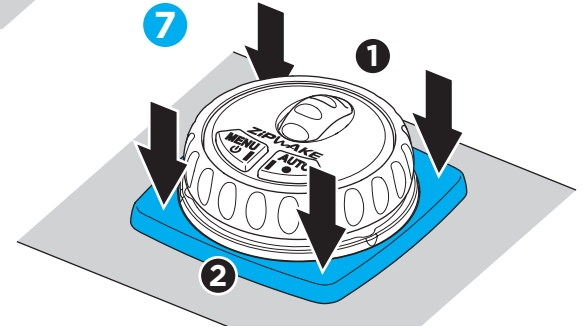
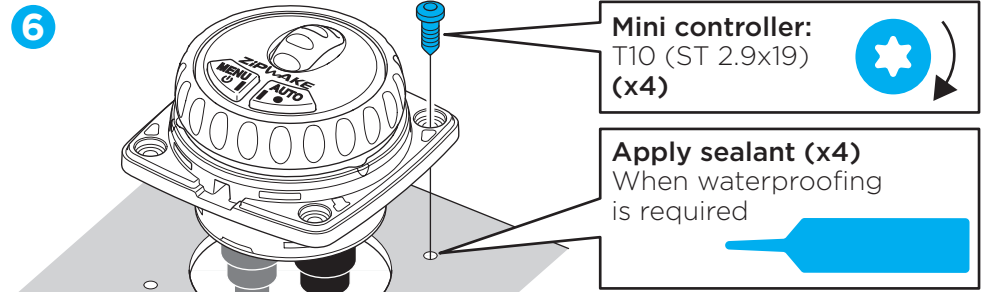
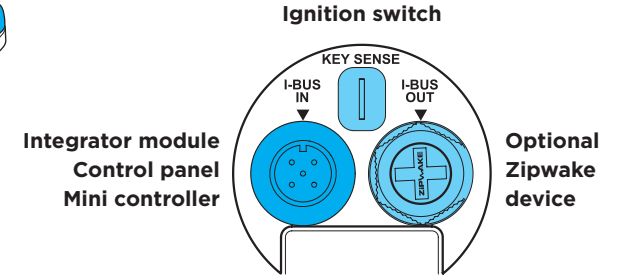
NOTE! 0.5 m (1.6 ft) safe distance to magnetic compass.



Flush mount option: Refer to zipwake.com for a drawing and 3D model.



5 Connect the cables on the back of the mini controller.



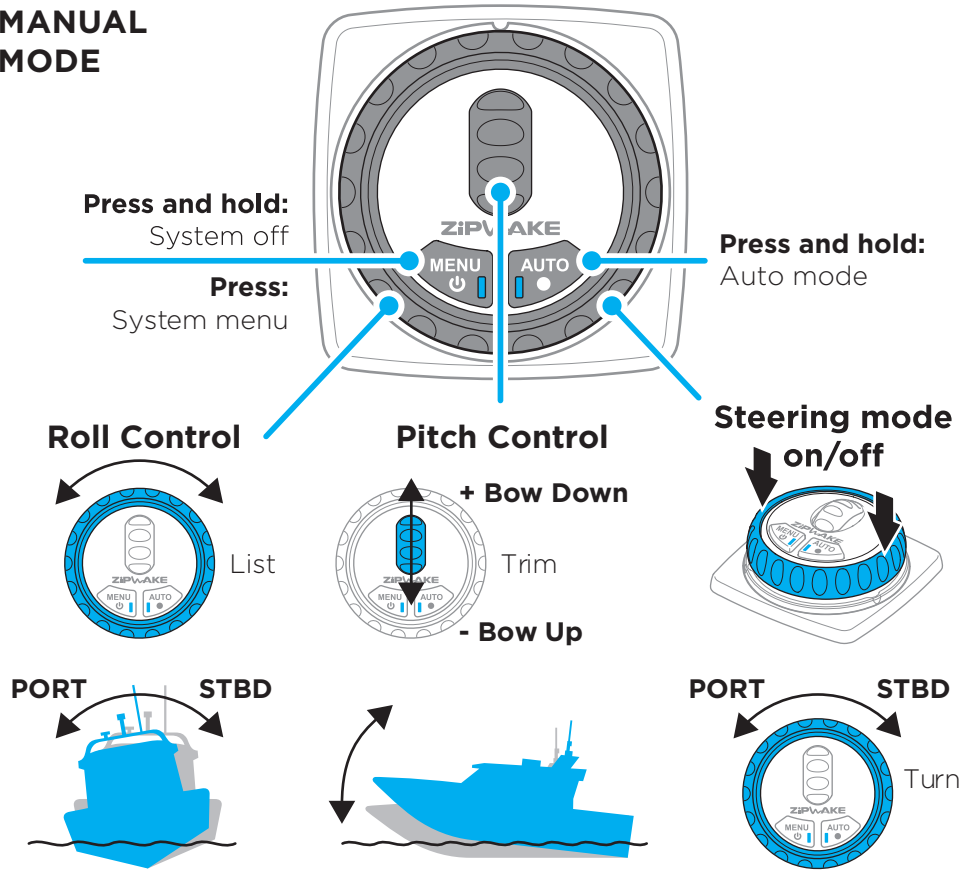
- NMEA 2000 documentation
 - Software upgrades for your Dynamic Trim Control System
 - Drawings and 3D models of system components
 - Application examples and interceptor mounting options
 - Product specifications, including a list of accessories and spare parts
 - Operator's Manuals and Installation Guides in different languages
- Visit zipwake.com for additional information such as:

NOTE! Refer to the Installation Guides and Operator's Manuals at zipwake.com for detailed information about setting up and operating the system.

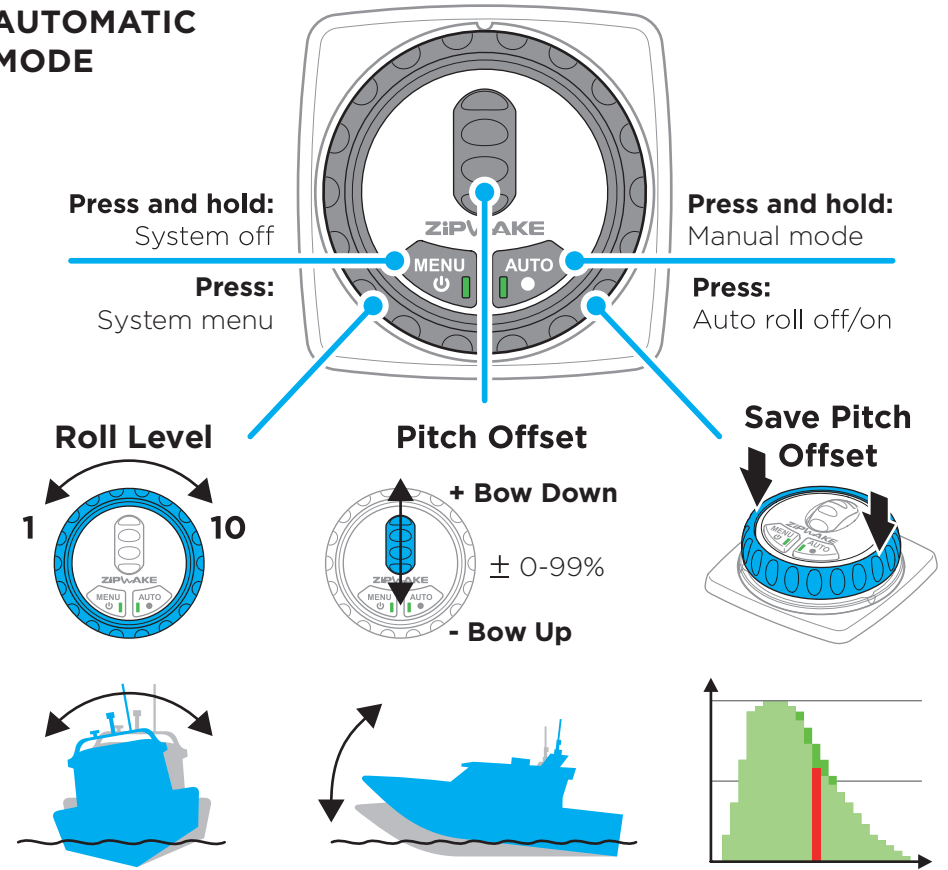
MINI CONTROLLER INSTALLATION AND QUICK GUIDE

MINI CONTROLLER FUNCTIONS

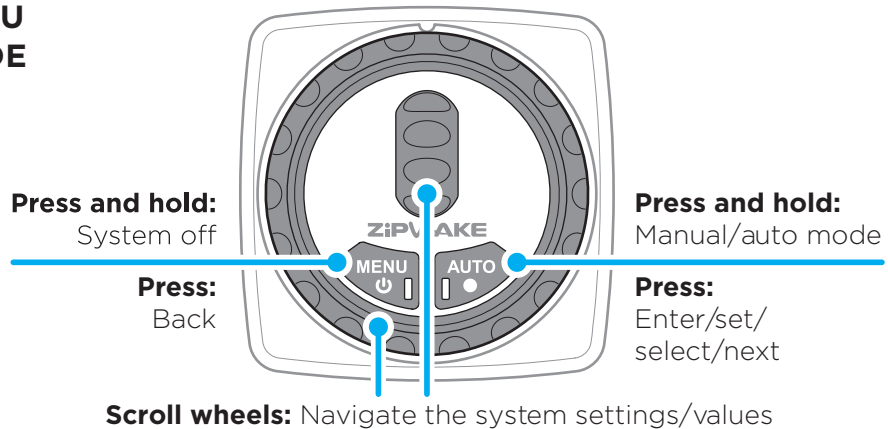
MANUAL MODE



AUTOMATIC MODE



MENU MODE



LED INDICATION

