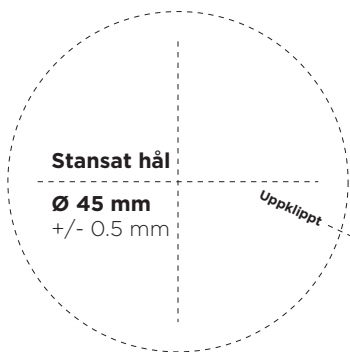
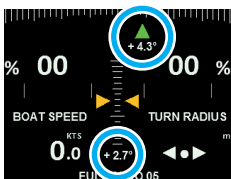


STARTUP CHECKLIST



ZERO PITCH & ROLL ANGLES?



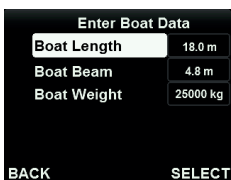
NO



YES



CORRECT BOAT DATA?



A: Press MENU

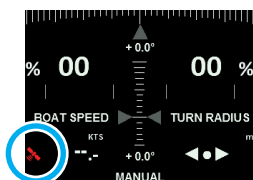
B: Select AUTO Setup

C: Select Boat Data

D: Change if incorrect



RED GPS SYMBOL VISIBLE?



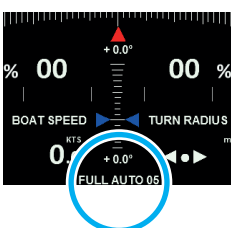
YES



NO



IS AUTO MODE ON?



NO



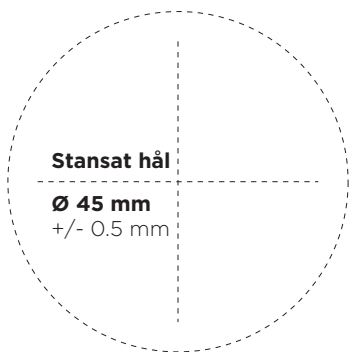
YES



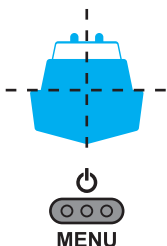
GO!

GO!

STARTUP CHECKLIST



RESET PITCH & ROLL ANGLES



A: Level the boat

B: Press MENU



C: Reset Pitch & Roll



CHANGE GPS SOURCE



A: Press MENU



B: Select GPS Source

C: Change Source



Refer to the Operator's Manual provided with your Zipwake System for full instructions and safety warnings.